



BLUE LOGIC

001 DURABLE SOLUTION

All components designed for repeated operations in tough environment. High-quality seals ensuring no leaks and long service life

003 HIGH FLOW – LOW PRESSURE DROP

The Stabs and Receptacles designed for high flow applications with low pressure drop. Suitable for operation up to 15 000PSI / 1035 Bar

BLUE LOGIC Ø55 HOT STAB SYSTEM

Ø55 Single Port Hot Stab designed for operations requiring high-flow and high pressure.

005 SHORT TERM OR LONG TERM

Available in short-term (intervention) and long-term (permanent) versions.

002 FLEXIBLE CONNECTION

No requirement for specific orientation of Stab during installation.

004 LARGE RANGE OF SYSTEM COMPONENTS

Complete range to all requirements.

- Protection stabs
- Pressure stabs
- Parking receptacles

006 EASY OPERATION

Click-lock feature and J-lock available to secure the stab to the receptacle once connected.



Blue Logic Ø55 Hot Stab System



BLUE LOGIC

Technical Data

Design Standard	API17H, Type 1
Stab Diameter	Ø55mm
Depth Rating	3000m
Temperature Range	-4 to +60°C
Working Pressure	1034bar / 15 000psi
Max Flow	350 l /min
Pressure Drop, Typical	2,5 bar @350 l/min
Hydraulic Interface¹	1" MP
Hydraulic Bore	Ø17,5 mm
Material, Hot Stab²	S165M, intervention type S32750 Super Duplex, permanent type
Material, Receptacle²	S32750 Super Duplex
Material, Seals³	HPU/NBR/PEEK
Fluid Compatibility⁴	Mineral and synthetic control fluids
Weight, Hot Stab, Air/Water	6,5 / 5,7kg
Weight, Receptacle, Air/Water	13,5 / 11,8kg

- 1: Other hydraulic interfaces available upon request
- 2: Other materials available upon request
- 3: Material to suit special medium available upon request
- 4: For special fluids, contact Blue Logic



BA2805 15K Hot Stab, MP1"



BA1564 15K Hot Stab, MP3/4"



BA3236 15K Hot Stab, w. Lock Mech.



BA1512 15K Pressure Stab



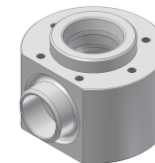
BA7312 10K Hot Stab, w. J-Lock



BA1560 Protection Stab



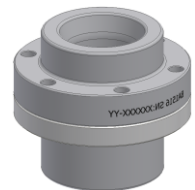
BA3235 15K Receptacle w. Lock Interface



BA1495 15K Receptacle



BA7310 10K Receptacle w. J-Lock



BA1520 Parking Receptacle