



### 001 HIGH FLOW – HIGH PRESSURE

Capable of up to 15 000 Psi working pressure. Ø5.5 full bore through for all ports.

The Ø63/Ø65 ValveStab system comes in short-term (intervention type) and long-term (permanent) configurations .

## Ø63/Ø65 15K ValveStab System

Combining hot stab and ball valve technologies in one quick-connector, the ValveStab allows for connect and disconnect with no spill or water ingress. High-pressure system – 15 000PSI / 1034Bar

### 003 ENVIRONMENTAL FRIENDLY

No spill of fluid to sea during connect/disconnect and operation.  
No water ingress in hydraulic lines.

### 005 SUBSEA SIMPLICITY

As the receptacle contains 6 isolation valves, subsea ROV panels can be designed without additional valves and valve handles. As result; less piping and fittings reducing both complexity and cost.

Low-cost alternative to Multi Quick Connector (MQC) systems.



### 002 INTEGRATED VALVES

ValveStab receptacle with integrated valves designed for connection of ValveStab. Integrated ball valves operated by ROV handle. Valve operation only feasible with ValveStab fully mated, and will open/close valves on both ValveStab and ValveStab receptacle in one go.

### 004 EASY OPERATION

Low mating force due to tapered diameter, Ø63 – Ø65.  
No seal-induced friction until the stab is half-way inserted.

Integrated lever arm to reduce final mating force. Colour-coded key system available to ensure that only male stab with correct key can be inserted.



# Blue Logic Ø63/Ø65 15K ValveStab System

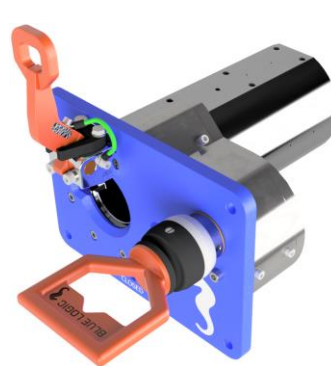
## Technical Data

Article No.	BB2899 & BB2916
Design standard	API 6A , ISO 10423 , NE-EN 13445
Stab diameter	Ø63/Ø65 mm
Depth rating	3000m
Operating temperature	-4 to +60°C
Max flow	60l/min
Pressure drop, typical	40 bar @60 l/min
Material, body <sup>1</sup>	Super Duplex
Material, seals <sup>2</sup>	RU4/PEEK1
Fluid compatibility <sup>3</sup>	Mineral based control fluids Synthetic control fluids
Hydraulic bore	Ø5,5 mm
Weight VStab, air/water	14,7 / 12,7 kg
Weight Receptacle, air/water	57,9 / 50,2kg
Working pressure	1034bar / 15 000psi
Hydraulic interface	6 x 3/8" MP

1: Other materials available upon request

2: Material to suit special medium available upon request

3: For special fluids, contact Blue Logic



BB2916 Ø63/Ø65 Vstab Receptacle



BB2899 Ø63/Ø65 ValveStab



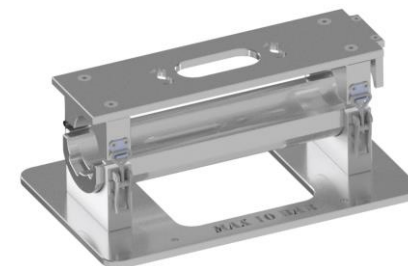
BB5536 Dummy Stab



BB5539 Parking Receptacle



BB5537 Ø63/Ø65 Flushing Stab, for flushing of receptacle



BB5588 Flushing Receptacle, for flushing of stab